

SHAKE WELL BEFORE USE

Rustins Teak Oil is a penetrating, water resistant oil to use on all woodwork, enhancing the natural beauty of wood and leaving an attractive low gloss finish. Ideal for use on all wooden furniture, panelling, window frames and sills. Rustins Teak Oil conforms to The Articles in Contact with Food Regulations and to the Toys (Safety) Regulations 1995, BS:EN71 Part 3.

Preparation

The surface must be clean, bare and sanded smooth. Oily woods (e.g. Teak, Iroko) will need to be cleaned thoroughly with white spirit. Bare wood may be dyed with Rustins Wood Dye. Only apply to dry wood with a moisture content between 12 -20 %. Do not apply to green timber. For floors use Rustins Floor Oil.

Application

Using a clean rag or brush apply liberally, then wipe off the excess after a few minutes. For a superior smooth finish the final coat may be applied using a plastic scouring pad, rub in the direction of the grain then wipe away the surplus with a soft cloth or paper kitchen towel. Special Note — For exterior wood, apply a minimum of three coats by brush, not a cloth. Horizontal surfaces and very exposed areas may require more frequent attention. Oak & softwoods are prone to weather-staining caused by moisture activating mould spores present naturally in the wood. It is advisable to treat the wood with Rustins Advanced Clear Wood Preserver before applying Teak Oil. Extra coats will be required to effectively seal these timbers, especially areas of end-grain, up to 6 coats initially followed by regular maintenance. Do not use below 10°C, in damp conditions or if rain is imminent.

Re-Coating Time

Allow 4-8 hours between applications depending on the temperature and humidity. New wood should be oiled 3 times initially.

Maintenance

Oiled wood should be re-oiled as necessary. The surface should be cleaned and dewaxed prior to oiling. After repeated oiling the surface may develop a gloss. This can be removed by rubbing with the grain with 00 or 000 steel wool and wax polish, finishing off with a soft cloth. For compatibility on previously oiled wood, try a small test area first.

Coverage

1 litre covers approximately 12 square metres per coat depending on the absorbency of the wood.

Cleaning

Clean brushes whilst wet with Rustins Brush Cleaner or white spirit. Remove as much product as possible from brushes before cleaning. Hard brushes can be cleaned with Rustins Brush Restorer.

Important

Rags used for oiling must be laid out flat to dry or destroyed, otherwise they may catch fire due to spontaneous combustion.

Disposal (pollution prevention)

Some local authorities have special facilities for disposal of waste paints/varnishes/coatings. Do not empty product into drains or watercourses.

Storage

Store in a cool dry place with the lid tightly closed.

HEALTH AND SAFETY:

Contains zirconium drier 18%, cobalt 6, methyl ethyl ketoxime. May produce an allergic reaction.

Flammable liquid and vapour. May be fatal if swallowed and enters airways.

May cause an allergic skin reaction.

May cause drowsiness or dizziness.

Wear protective gloves and eye protection.

IF SWALLOWED: Immediately call a POISON CENTRE or doctor.

IF ON SKIN (or hair): Remove immediately all contaminated clothing. Rinse skin with water.

Keep away from open flames. - No smoking.

Do not breathe fumes.

Keep out of reach of children.

UFI: 5CNY-JDD2-520Y-3NTV

Please refer to Product Data Sheet for full information at www.rustins.co.uk



DANGER



EU Limit value for this product (CAT A/f): 700g/l (2010). This product contains max 600g/l VOC.

For information on Rustins' products visit our website at www.rustins.co.uk or contact us at Rustins Ltd, Waterloo Road, London, NW2 7TX United Kingdom rustins@rustins.co.uk Telephone: +44 (0)20 8450 4666

ROl: Excellence Ltd, 43 Grange Parade, Dublin D13 Y860 Ireland. Tel: +353 1 - 832 3300



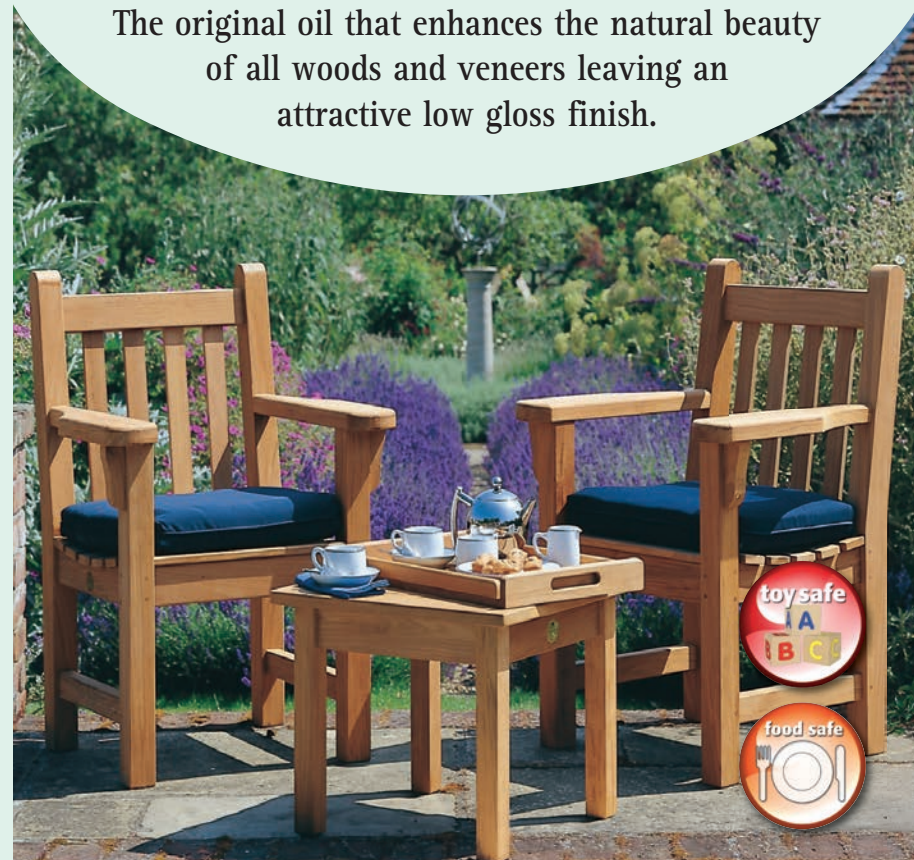
Rustins



Rustins

Teak Oil

The original oil that enhances the natural beauty of all woods and veneers leaving an attractive low gloss finish.



Rustins

Ideal for

Shelves

Tables

Chairs

Loungers

Benches

Doors

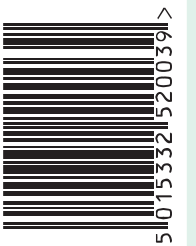
Bannisters

Suitable for all wooden garden furniture

Timber Cladding

Window Frames

Window Sills



1 Litre e

FOR INTERIOR & EXTERIOR USE

Conforms to the Toys Safety Regulations BS EN71 Part 3 1995